



Maximize your Design, Construction and Planning

Efficiently plan, design, construct and manage buildings and infrastructure with Building Information Modeling (BIM) from Proficient Engineering.

Whether you're verifying existing conditions or coordinating a new BIM model, Proficient can help you from the design process to the finished building using hyper coordinated BIM models, 3D laser scanning and data rich modeling.

Why use BIM services?

- Save time and money
- Avoid costly delays
- Minimize unforeseen field issues
- Offset construction risk
- Increase efficiency

Why Proficient?

- **Expertise** - We combine decades of engineering, design and construction experience with the latest technology
- **Coverage** - With full-service MEP engineering expertise coupled with HVAC test and balance services, we provide both in-house and field teams
- **All-in-One Solution** - Our comprehensive BIM solution goes beyond point cloud scans

Contact Tim Carroll

Learn more about Proficient's BIM services

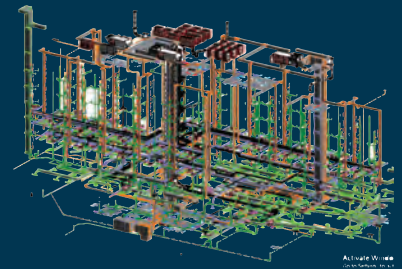
☎ 404-330-9798

✉ tcarroll@proficientengineering.com

For Architects/Engineers/Owners

Proficient provides

- As-built Scans
- As-built Modeling
- Existing Conditions
- Augmented Reality
- Photo-realistic Renderings
- Fly-throughs
- Building Assessment Reports
- COBie Data



Benefits

- Gain insight into building specifics
- Reduce RFI, measurement and modeling costs
- Reduce site visits and disturbances
- Gain more accurate scans
- Leverage scans for a building's lifespan

For Contractors

Proficient provides

- Virtual Design & Construction (VDC)
- Clash Detection
- Construction Validation
- As-built Scans
- As-built Modeling



Benefits

- Reduce RFI and construction costs
- Subcontract more efficiently
- Reduce change orders
- Build faster drawings and project schedules
- Save time and money with more offsite fabrication
- Conduct HVAC test and balance simultaneously