



**Fulton County Government Center
Renovation | Atlanta, GA**

For the Fulton County Government Center, Proficient provided services for the interior renovation and expansion of the 3rd floor conference and training room. This included separating the existing conference and media room to create room for one large multi-purpose space.



Braselton Civil Center | Braselton, GA

The civil center is a new construction, pre-engineered metal building with 2 stories. The center includes an administrative office, a multi-purpose room, a ballroom, a lobby, a kitchen, restrooms, and storage and utility rooms.



**City of Atlanta Office Building
| Atlanta, GA**

The City of Atlanta office building is located on 160 Trinity Avenue in the middle of the Downtown Atlanta Government Center. The structure is a 61,399 square feet with 3 stories. A VRF system was included in Proficient's design.



**Neva Lomason Memorial Library
| Carrollton, GA**

The Neva Lomason Memorial Library project involves adding 10,000 square feet to the current 18,000-square-foot building. The space includes meeting areas, additional public computers and accessible collections.



**West Memphis Municipal
| West Memphis, AR**

The project scope consists of a 9,000-square-foot fire station and police substation, a 12,000-square-foot municipal courthouse, and a 7,500-square foot fire station.



**Jefferson County Municipal
| Jefferson County, AR**

The municipal features three 1-story buildings. One is ~12,800 SF and includes a lab, pharmacy, and exam rooms for Jefferson County Health. The second is a 9,000-SF structure for the County Coroner's office. The third is roughly 5,300 SF and is for the Affairs Building in the downtown historic district.



**Cornelia Municipal Complex
| Cornelia, GA**

The Cornelia Municipal Complex is a 36,500 square foot structure that includes a city hall, police department and fire station.



**Jackson County Agricultural Center
| Jefferson, GA**

Located on the intersection of County Farm Rd and Fowler Dr, Georgia, the new construction agricultural center is an approximately 43,000-square-foot, prefabricated metal building. The facility possesses wash rooms, multi-purpose rooms, show areas, offices, storage rooms, conference rooms, restrooms, concession areas, a kitchen, and utility rooms.



Decatur Visitors Center | Decatur, GA

The Decatur Visitors Center project is a fit out of a 4,600-square-foot existing space for the city of Decatur. The space includes two conference areas, an office space, a storage area, and a bathroom facility.



The Beltline Visitors Center | Atlanta, GA

The Beltline Visitors Center project is a fit-out of a 4,300 square foot visitors center for the Atlanta Beltline. The space includes a new conference room, an office space, and a storage area.



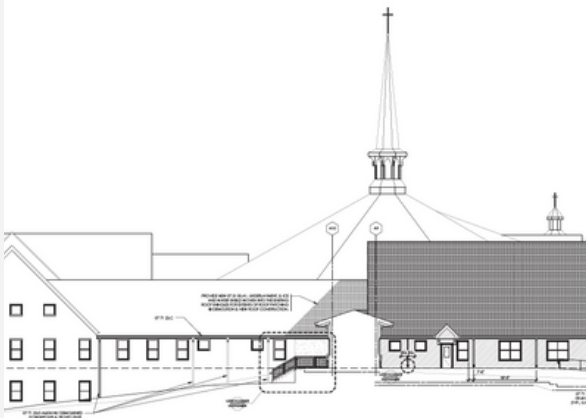
Public Church | Cleveland, TN

The Public Church project involves the MEP design of a 10,700-square-foot worship space. This includes a 4,500-square-foot auditorium with a temporary stage and 400 seats and a 3,200-square-foot lobby.



Foothills Church Renovation | Maryville, TN

This project includes a 27,000-square-foot office/daycare renovation at Foothill's Church. The existing space is a pre-manufactured metal building and the renovation will cover the ground floor and mezzanine above.



St. Ann Catholic Church Addition | Marietta, GA

The addition involves the design of a new construction, 2-story wing. The spaces included in this are administrative offices, meeting rooms, back of house/utility areas, an assembly hall, a commercial kitchen, and corridors.



Sonrise Community Church | Summerville, GA

For Sonrise Community Church, Proficient provided the MEP engineering design for an addition onto an existing building. This included a recreation area, classrooms, a kitchen and dining area, and office spaces.



Saint Brendan's Catholic Church | Cumming, GA

St. Brendan Church project includes the design of a 2-story addition to the Saint Brendan Navigator sanctuary building. This includes the addition of elevator lobbies, staircases, offices, multi-purpose rooms, a chapel, a reception hall, a break room, a parlor, an exterior rooftop patio, and an expansion to the existing narthex.



Grace Midtown | Atlanta, GA

The Grace Midtown project consisted of two separate designs. The first section involved the “kidtown” area, and the second consisted of a new auditorium. The work for “kidtown” includes a standalone building with 8 different classrooms and 2 sets of bathrooms. The auditorium contains a sanctuary, performance theater, and a café bar.



Impact Worship Center | Mableton, GA

The Impact Worship Center project included renovating the existing space entirely. The 22,000-square-foot building now features a sanctuary with a performance theater, a fitness gym, a nursery center, an office area, a bookstore, a community area, and a café with a kitchen.



Christ the King Catholic Church | Pine Mountain, GA

When Christ the King Sanctuary and Nave sustained fire damage from a lightning strike Proficient was hired to help restore these areas to good condition. The scope of work totaled 5,900 square feet.



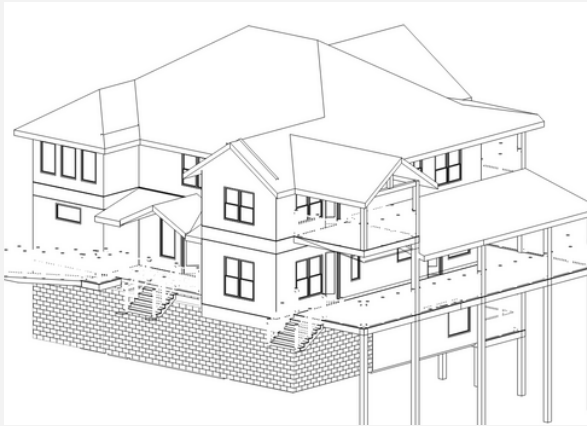
Anderson County Senior Center Renovation | Clinton, TN

The 3,700-square-foot renovation took place in the center's worship space. The new areas include a 600-square-foot kitchen and storage room and a 3,100-square-foot seating area.



Lumpkin County Senior Center Renovation | Dahlonega, GA

The renovation provided a modernization and better utilization of the center's outdated space planning. This featured an expansion of the dining room and the placement of a corner office in the kitchen as well as a small closet for the water heater. Admin, storage, and workout areas were moved to the back of the addition.



Laughing Pine Lane Cabin | Sevierville, TN

Located at Laughing Pine Lane, we provided the MEP design for an approximately 6,000-square-foot, 3-story custom cabin. The structure includes an 800-square-foot pool room located in the basement. Fire Protection design intent documents were also provided for the entire cabin.



Child Development Center | Tyndall Air Force Base, FL

For Tyndall's child development center, we put together a ASHRAE 90.1-2013 compliant energy model that predicts the total energy usage of the building. Using this model, we put together a life cycle cost analysis of a couple different building designs to see which one used the least energy over a 40 year study period.



North Fulton Child Development Association | Roswell, GA

The 3,700-square-foot renovation took place in the center's worship space. The new areas include a 600-square-foot kitchen and storage room and a 3,100-square-foot seating area.



Rockwood Fire Station Addition | Rockwood, TN

Located along 815 N Kingston Avenue, the Rockwood Fire Station required MEP Design Engineering for an approximately 1,687-square-foot addition. This includes bedrooms, a utility room, bathrooms, a kitchen/living space, and an office.