



Families First | Atlanta, GA

The building, originally constructed in 1890, is 33,000 square feet and formerly housed E.R. Carter Elementary School. Families First decided to relocate their headquarters to this location in West Atlanta. The design included a unique open concept plan with sound masking for privacy.



Lee + White Redevelopment | Atlanta, GA

The Lee + White Development building dates back to the 1950's. The project features an adaptive reuse of an approximately 99,000-square-foot, double height yet single story building into a creative office space. Additional food hall space (25000sq) with inclusion of a bar area and patio.



202 Milton | Atlanta, GA

This is a historic school that is being renovated and converted into offices and film production spaces. The facility consists of 22,000 square feet distributed across three 3 levels. A single sound stage with back-of-house supporting functions as well as multiple editing, pre and post-production control rooms are included.



Mammal Gallery at the Met | Atlanta, GA

The project involves the repurposing of a water tower that once served as a fire-suppression system for the 105-year-old mammoth warehouse complex. The tower will be a 2-story bar and the the adjacent 6,100-SF warehouse will feature a 300-person performance venue.



Parsons Alley | Duluth, GA

Parsons Alley, located in Historic Duluth, is over 30,000 square feet of restaurant and shop space in a dozen spaces ranging from 700 square feet to over 5,000 square feet.



Complex | Atlanta, GA

Complex, a redevelopment involving six attached post-WWII warehouse buildings in West Midtown into loft office and retail spaces, totals approximately 105,000 square feet. The adaptive reuse project is one of many that offers office tenants a location different from a glass tower.



Property Service Group Office | Knoxville, TN

A historic church building on 6th Avenue was renovated into a 4,500-square-foot office for Property Service Group's Southeast location.



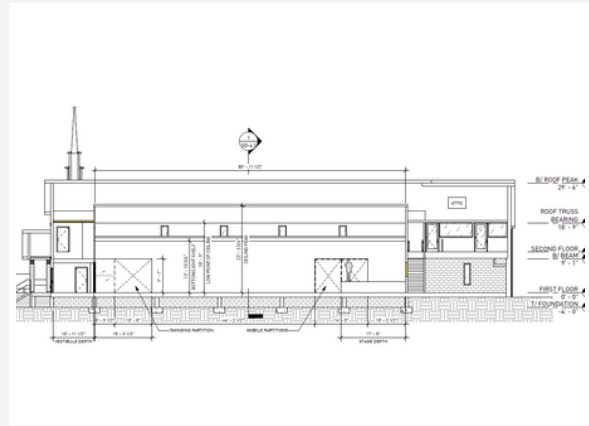
Circa 730 | Atlanta, GA

The Circa 730 project is a roughly 30,000-square-foot renovation of a office building located on 730 Peachtree Street that was built in 1967. This includes the lobby area and 3rd floor.



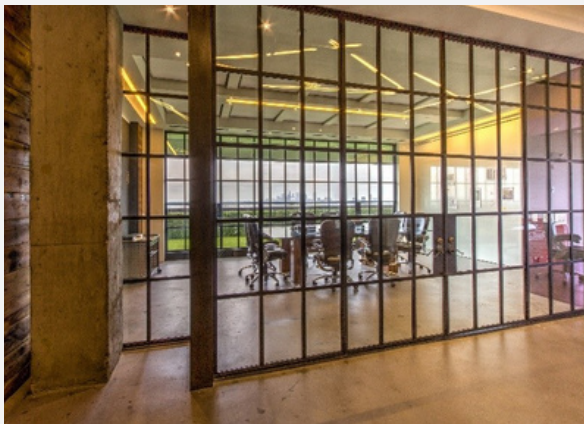
Frothy Monkey | Knoxville, TN

The Frothy Monkey project features a 4,500-SF restaurant fit-up in the historic Kress building. The space includes a 700-SF mezzanine with dining seating. The restaurant will seat 150+ occupants with an indoor and outdoor patio along Gay Street.



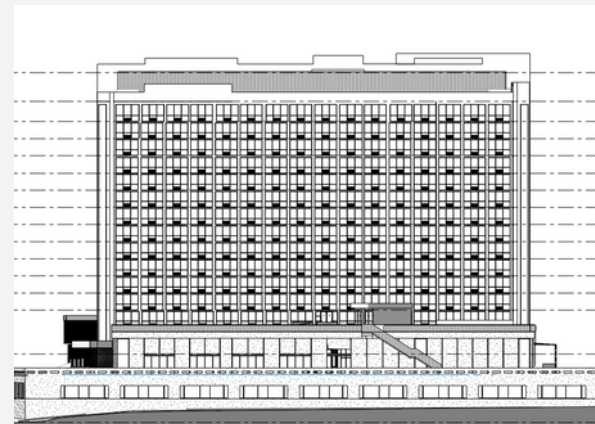
1206 Metropolitan Ave | Atlanta, GA

On 1206 Metropolitan Avenue, a 8,500-square-foot church built in 1965 will be converted into an art gallery with accessory studio spaces, offices, and storage.



550 Pharr Road | Atlanta, GA

Three, an up-and-coming advertisement firm, relocated their corporate office to the top two floors of the 550 Pharr Building in Buckhead. The project renovation includes 11,000 square feet of office space with upgrades to all of the outdated MEP systems within the 47-year-old building.



450 Hank Aaron Drive | Atlanta, GA

Involving the renovation and adaptive reuse of a former mid-century, 15-story hotel, the development features 249 apartment units, with a portion being micro-studio apartments, and approximately 55,000 SF of commercial tenant spaces on the 1st and 2nd floors.



PCM Tenant Fit-Outs | Atlanta, GA

Proficient Engineering has participated in multiple tenant-fit outs located in the historic Ponce City Market. All spaces designed include Candle Fish, Farm to Ladle, Mercury Lounge, Tap on Ponce, and Karoo. The work provided integrated seamlessly into PCM's condenser water system and dealt with the unique electric requirements of the facility.



KWA Office HQ | Atlanta, GA

With a total of 4,800 square feet split evenly over two stories, Kronberg Wall's studio is located in what was the historic church's sanctuary with a separate tenant space below.



2909 Peachtree RD | Atlanta, GA

This historical building renovation is on Peachtree road just north of downtown Buckhead. Proficient preserved much of the original building while upgrading the MEP Systems and efficiencies.



Sobu Flats Conversion | Atlanta, GA

We are currently providing mechanical and plumbing engineering for the conversion of the Sobu Flats building in Revit. The early 1950's building will feature a 135,000-square-foot, boutique hotel with 9 stories and a variable refrigerant flow (VRF) for the HVAC.