



Holiday Inn Express & Suites Renovation | Lancaster, OH

The existing Holiday Inn Express & Suites building consists of 3 stories, 63 guest rooms, and an enclosed swimming pool. The renovation includes new finished, new casework, exterior and interior repair work, and 2 new meeting rooms that will replace 2 existing guest rooms.



Hampton Inn Renovation | Knoxville, TN

Located in Cedar Bluff, the project involves an approximately 7,600-square-foot hotel renovation. The scope of the work includes first floor spaces such as common restrooms, a meeting room, offices, a lobby, a breakfast area, a food prep area, and fitness room.



Bellyard | Atlanta, GA

The roughly 110,000-square-foot hotel features 161 keys across seven floors of guestrooms. All common areas, including the lobby, restaurant, bar, and meeting space, will share a single floor.



TownePlace Suites by Marriott | Buford, GA

The TownePlace Suites project involves modifying the hotel's Gen 4 prototype to Gen 5 interior updates. The 85-key hotel features a porte-cochère and an interior swimming pool. The structure had metal stud bearing walls with hollow core concrete plank floors and metal roof trusses.



**Fairfield Inn by Marriott Conversion
| Germantown, WI**

A Holiday Inn Express in Germantown, WI is being converted into a Fairfield Inn. The original hotel is a 74 room, 2-story wood frame structure built in 1999. Amenities include a fitness room, indoor pool, guest laundry, and approximately 600 square feet of meeting space. An additional floor will be added to increase the total guestrooms to approximately 114 keys.



Inn at Patrick Square | Clemson, SC

The Inn at Patrick Square is a boutique hotel that will feature 45 guest rooms, a ballroom with capacity of up to 150 and the Stumphouse Café. It offers an authentic, traditional setting overlooking the beautiful Village Green..



Avid Hotel | Asheville, NC

The Avid Hotel project involves the development of a new, 41,6950-square-foot hotel with 4 levels and 87 rooms.



**Staybridge Suites by IHG
| Duluth, GA**

Staybridge Suites is going to be in Duluth, GA. This project is a new, ground up, 5-story, 115-room hotel.



**Atlantis Resort- Phase III
| Bahamas**

The Phase III expansion included a new hotel and beachside villas, a 100,000-square foot convention center, an expanded casino, and a canal created to connect the entrance of the existing lagoon to Nassau Harbor. Prior experience.



The Hyatt | Augusta, GA

Hyatt Augusta is a 70,000-square-foot, 4-story hotel. The facility was built to provide added hospitality options in Augusta and specifically for the Masters. The facility includes a guest dining room and bar with a full commercial kitchen, a business center, multiple meeting rooms, and commercial and guest laundry areas.



**Home2 Suites by Hilton
| Gulf Breeze, FL**

This Home2 Suites located in Gulf Breeze, Florida is 56,651 gross square feet. The ground floor amenity and service spaces are approximately 11,630 square feet. There are 107 guest suites comprised of 2-4-unit types. Extended stay suites will include a kitchenette.



Sobu Flats Conversion | Atlanta, GA

Proficient Engineering is currently providing mechanical and plumbing engineering for the conversion of the Sobu Flats building in Revit. The early 1950's building will feature a 135,000-square-foot, boutique hotel with 9 stories and a variable refrigerant flow (VRF) for the HVAC.



**Courtyard by Marriott
| Rock Hill, SC**

The Courtyard was a renovation project. The building is 115,020.72 square feet and has 90 rooms. The 3-story structure contains fitness facilities, an indoor pool, and laundry facilities.



**Marriott Hotel | Georgetown, Guyana
South America**

The Guyana Marriott hotel is an ongoing renovation project that can consist of correcting HVAC deficiencies, specialty lighting, special grounding systems, and more. The building is about 280,000 square feet and has 9 floors and 197 rooms.



**Residence Inn by Marriott
| Greensboro, NC**

The Residence Inn is 7 stories and 88,183 square feet. The project includes fitness area office space, bedrooms, and laundry room.



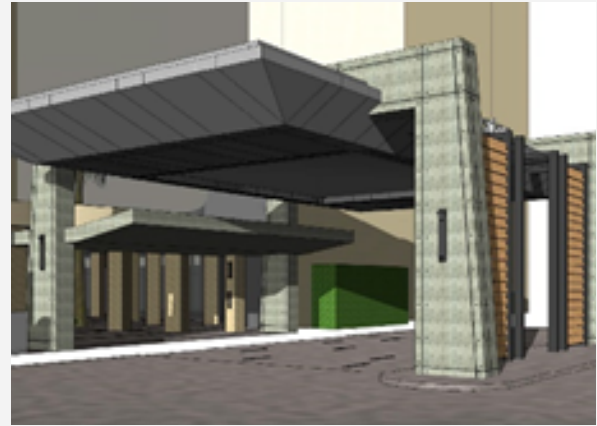
**AC Hotel by Marriott
| Greenville, SC**

The AC Hotel is currently being designed in Revit. The building will be about 160,881 square feet and have a total of 197 rooms, 7 floors, and a rooftop terrace.



SpringHill Suites by Marriott | Naples, Florida and Lexington, KY

The SpringHill Suites in Florida has 102 rooms and is 4 stories. The building contains kitchenettes in each room, an outdoor pool, fitness center, and a picnic area.



Sheraton Hotel by Marriott | Plantation, FL

The scope includes a preform MEP equipment assessment for compliance, a revision of the hotel entrance, front desk pods, valet stand, and business center, an expansion of the fitness center, and renovation of the guestroom tubs with shower enclosures.



Fairfield Inn by Marriott | Dawsonville, GA

The scope of the project includes the mechanical, electrical, and plumbing engineering of a wood frame hotel that totals 56,809 square feet with 4 stories and 92 rooms.



W Hotel Downtown by Marriott | Atlanta, GA

W Atlanta - Downtown is a 28 story tower in the heart of downtown Atlanta. It has 237 hotel rooms, 76 residences, 10,000 square feet of meeting space, and features an outdoor pool and helipad at the top of the building. Prior experience.



**Residence Inn by Marriott
| South Haven, MS**

The Residence Inn is 94,124 square feet and has 3 stories. The 78-room building includes a business center, pool, outdoor patio, sports court, and dry cleaning.



Moxy Hotel by Marriott | St. Louis, MO

The Moxy Hotel is 6 stories with an added basement. The building is 50,000 square feet and contains 105 guest rooms.



The Omni Hotel | Atlanta, GA

This hospitality building has 1,059 guest rooms and suites and is located in the heart of downtown Atlanta. The Omni Atlanta Hotel at CNN Center is connected to Philips Arena and the Georgia World Congress Center. Prior experience.



**Best Western Plus Renovation |
Pigeon Forge, TN**

The Best Western Plus renovation included the mechanical and electrical engineering design for approximately 4,900 square feet of the hotel's ground floor. The new equipment design featured a split system for the lobby, a split system for a meeting room and bathrooms, and (5) mini-split ceiling cassettes for the fitness room, the prep kitchen, and corridors.



Clarion Pointe Renovation | Statesville, NC

The project features converting an existing Quality Inn into a Clarion Pointe. The 2-story motel has 110 guestrooms and 2 buildings. The scope of work included a new upright parapet on the buildings and a new MEP design for the motel's front of house including the lobby, bathrooms, pantry, and conference room.