



### **Fulton County Airport Hangar | Atlanta, GA**

Proficient designed the MEP systems of a one-story aviation hangar with offices for the Fulton County Airport. The project totals approximately 14,774 square feet.



### **Main Gate Logistics | Garden City, GA**

Located at 1 Prosperity Drive, the Main Gate Logistics project involves a fit-out of an existing 125,000-square-foot shell building to a warehouse and distribution facility with heat, ventilation, lighting and battery charging stations. A full fit-out of three remote offices within the space is also included.



### **Daeyoung Electronics Manufacturing Facility | Newberry, SC**

Based in South Korea, Daeyoung Electronics Co. Ltd manufactures semiconductors, semiconductor parts, and other electronic parts. We designed the mechanical, plumbing, and electrical engineering for their new, approximately 40,000-square-foot manufacturing facility in Newberry, SC. The design is complete, and currently, we are working on the construction administration phase of the project.



### **Rockdale Technology Center | Conyers, GA**

The Rockdale Technology Center involves the design of a 150,000-SF warehouse building and a 3,000-SF office space. Plumbing will be on one side the length of the building for sanitary and water. The electrical service is designed for 2,000-amp service at each end with conduits to double in future. Freeze protection with gas fired space heaters are also included to maintain 45 to 50 degrees.



### SK Innovation Battery Plant | Jackson, GA

With nearly 300 acres in Jackson County, The SK Innovation Battery Plant plant sources a plentiful amount of batteries to power 200,000 electric vehicles per year.



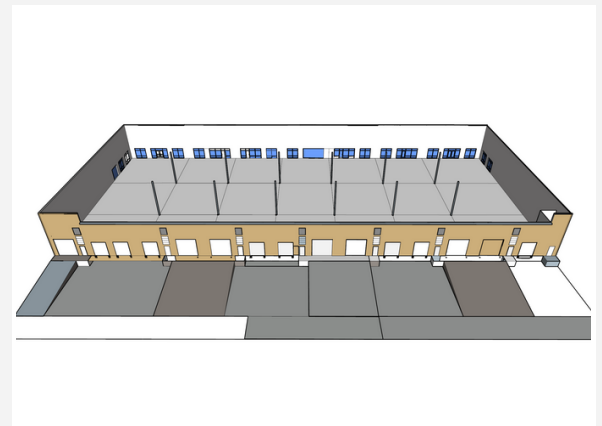
### Hyundai Transys Plant Extension | West Point, GA

Including factory, office, and facility areas, the plant totals 569,603 square feet. The scope of work includes a new construction site of the Transys Georgia Transmission Shop for a siphonic storm drainage system.



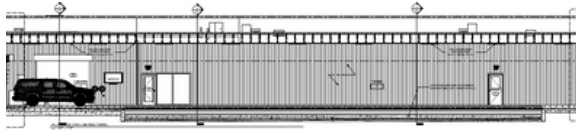
### LG Electronics Washing Machine Facility | Clarksville, TN

The LG Electronics' 1 million square-foot facility is their first washing machine plant built in the United States. Located on a 310-acre site, the facility offers a wide range of opportunities for product production.



### RAK Brothers 1 | Lewisville, TX

The scope of the project includes a 4,185-square-foot shell building with plumbing and electrical utility stubs and freeze protection heating. There are also three 5,200-square-foot tenant spaces with warehouse and office fit-outs.



**Duvall Express Car Wash  
| Clayton, GA**

The car wash includes rooms for a tunnel, loading, operations, a toilet, mat cleaner, IT, and equipment.



**Chrysler, Dodge, Ram, Jeep  
Dealership | Woodstock, GA**

The Chrysler, Dodge, Ram, Jeep Dealership project includes the renovation of an approximately 64,000-square-foot "big box" retail property into a car dealership. It includes a showroom and service and parts department.



**Republic National Distributing  
Company | Across the USA**

The RNDC is the second largest beverage alcohol distributor of premium wine and spirits in the U.S. with operations across the U.S.



**Shottenkirk Ford Renovation  
| Jasper, GA**

The renovation includes a 8,200-square-foot showroom, customer lounge, service writer, and office modification.





### Deerland Enzymes | Kennesaw, GA

This project is a 40,000-square-foot structure with multiple cleaning and storage rooms, a bottling area, an enzyme growing room, offices, a break room and restrooms. The large processing area was designed to maintain less than 35% relative humidity.



### Kona Jet Center | North Kona, HI

Kona Jet Center is located on the south end of the Ellison Onizuka International Airport. Proficient provided the MEP preliminary work for the project's design development as well as construction documents. The scope includes a 7,000-square-foot executive terminal, two 35,000-square-foot hangars, and a 50,000-gallon fuel storage facility.



### Shottenkirk Toyota Dealership | Weatherford, TX

The new dealership is approximately 48,000 square feet with a lot space for a 500+ car inventory. Car wash, quick lube, sales, and service facilities are included.



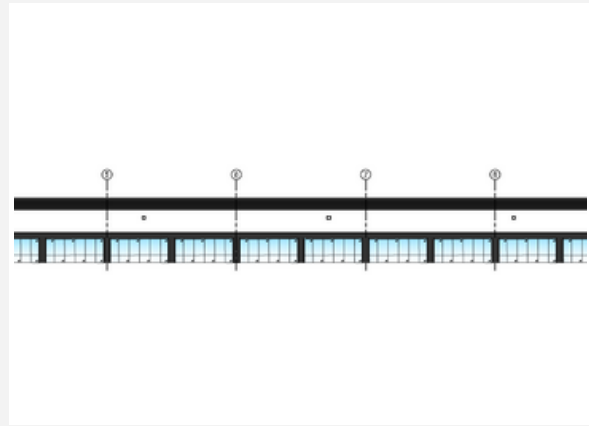
### Prime Subaru | Norwich, VT

Prime Subaru is a 32,000-square-foot car dealership that includes a showroom, customer lounge, office, conference space, and service shop all laid out over two floors.



### Sky Harbour BNA | Nashville, TN

The project consists of nine 12,000-square-foot hangars, each with 1,600 square feet of office space, for the Nashville International Airport (BNA). All the office areas include a lounge, a galley kitchen, a laundry room, and restrooms. A 2,100-square-foot service support building is also included.



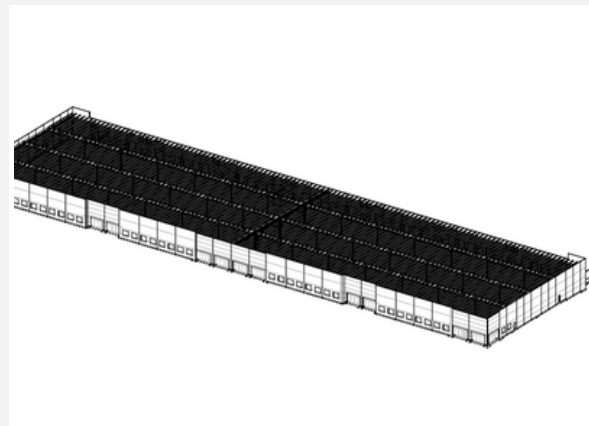
### Schoen Insulation Services | Canton, GA

For Schoen Insulation, Proficient is performing MEP design services for a 105,000-square-foot warehouse fit-out including lighting & photometrics, ventilation, and freeze protection heating. The project also includes an approximately 12,300-square-foot office fit-out.



### O2 Energy | Yadkinville, NC

O2 Energy is a 3.5-megawatt solar farm set on a 51-acre site.



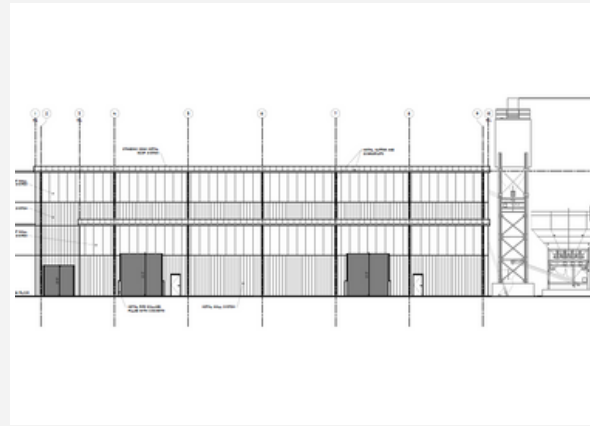
### Hanger | Alpharetta, GA

Hanger is a lead provider of orthotic and prosthetic services and products. The project consists of the group's relocation to a 144,554-square-foot building. This includes approximately 25,000 SF of office space, approximately 15,000 SF of manufacturing space, 4,440 SF for returns and a hazmat room, and the remainder will be warehouse space.



**UPS Tenant Improvement  
| Charlotte, NC**

The UPS Tenant Improvement project involves renovations to interior office space a existing 35,758-square-foot warehouse building.



**Foley Products Company  
| Winder, GA**

For Foley Products Company, Proficient provided MEP services for a new, 26,376-square-foot metal building that is used as a automated manhole manufacturing plant with an accessory office, restroom, and locker.



**Valentine Enterprises  
| Lawrenceville, GA**

The Valentine Enterprises, Inc. facility is 230,000 square feet with industrial blending and packaging areas, a warehouse, two levels of office area, conference rooms, a cafeteria, and support areas.



**Porsche South Orlando  
| Orlando, FL**

As the nation's largest Porsche dealership, Porsche South Orlando has a 120,000-square-foot sales and service area with a 2-story showroom. The facility is also LEED Silver Certified.





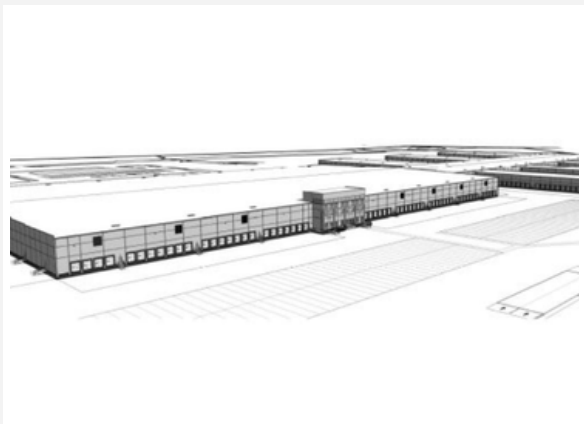
**Buford Creek Distribution Center II  
| Buford, GA**

Buford II is a 252,540-square-foot facility with a 177,200-square-foot warehouse.



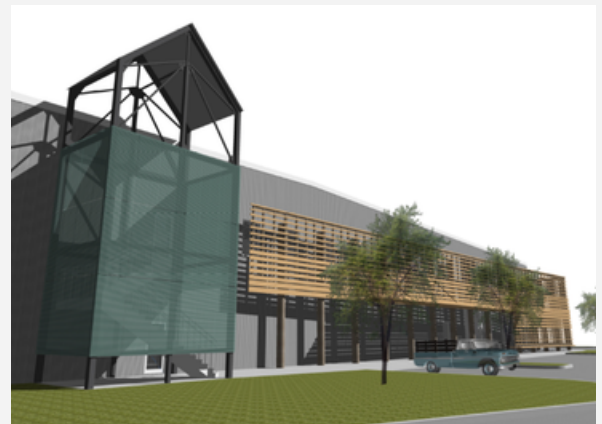
**IVC International | Dalton, GA**

With 300,000 square feet of mostly industrial space, IVC International is used to manufacture flooring.



**United Parcel Service | Atlanta, GA**

This 1.12 million-square-foot distribution facility includes a main hub building, a service center, a wash tunnel building and several guardhouses.



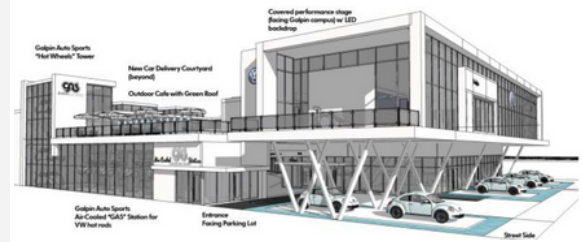
**Limehouse Produce Cold Storage  
| Charleston, SC**

The Limehouse Produce project is 50,000 square feet with 20,000 square feet of refrigeration area. The support areas include warehouse areas, a mezzanine, offices, a conference room, and support areas.



### Mike Erdman Nissan | Cocoa, FL

The site area for the Mike Erdman Toyota & Nissan property is 34.23 acres with the Nissan building totaling approximately 45,789 square feet.



### Palmetto Volkswagen | Miami, FL

Palmetto Volkswagen is a 40,000-square-foot facility that includes a Galpin Auto Sports “Hot Wheels” power, outdoor café with a Green Roof, and a covered performance stage with a LED backdrop.



### Sun Auto Warehouse | Cicero, NY

Sun Auto Warehouse is a 45,000-square-foot building that is planned to replace an aging, existing building in the process of being demolished. The facility includes a sales floor, administrative areas, a service shop, a service drive, detail bays, storage areas, and a car wash.



### Sutherlin Nissan | Holly Springs, GA

Sutherlin Nissan is a 45,000-square-foot car dealership with showrooms, multiple garages (conditioned and just heated), offices, a training room, a car wash, a warehouse, and support areas.





### **Southpark - Building 2 | Fairburn, GA**

As part of the Southpark mixed-use development, Building 2 features the design of an approximately 250,000-square-foot speculative warehouse building and a 2,860-square-foot speculative office space. The scope includes the design for fire protection performance with electrical pump, a wall mounted electric unit heater for freeze protection, and LED fixtures and lights. The building is being designed with the intent for LEED certification.



### **Greenwood Industrial Park - Lot 900 | McDonough, GA**

The Greenwood Industrial Park - Lot 900 project involves the design of a 291,200-square-foot speculative warehouse with 4,000 square feet of office space. The facility is being designed with sustainable features in pursuit of LEED certification.