



### **WellStar Medical Center | Across the U.S.**

Several WellStar medical offices have been designed by Proficient across the United States. The projects range from approximately 3,000 square feet to 8,000 square feet of office space renovations.



### **PT Solutions | Across the U.S.**

A typical PT Solutions project is 3,000 square feet. The facilities include a physical therapy room with machines and other rehab equipment, office and support areas.



### **Good Samaritan Health and Wellness Center | Jasper, GA**

Good Samaritan Health and Wellness Center provides free or low cost healthcare to adults, families, and children in the Pickens County community. This project included a 9,200-square-foot addition as well as a renovation of the existing building and an expansion of the parking lot.



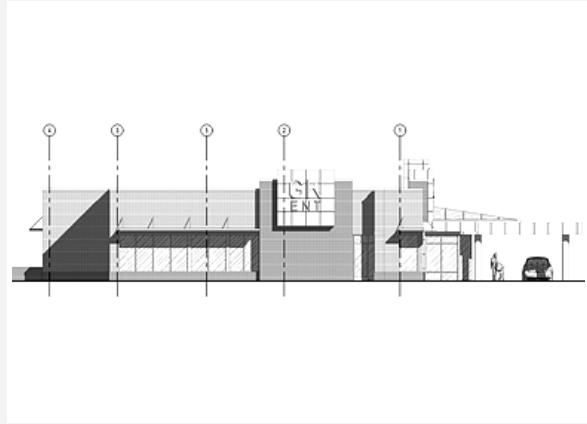
### **PAIN ASC | San Antonio, TX**

Located on the 5th floor of a high rise building on 8401 Datapoint Drive, the project is a Class B surgery center with 2 operating rooms. The scope involved integrating the existing base-building MEP systems as well as coordinating new specialized systems for the center.



### **Emory Cardiology Clinic & Imaging Renovation | Peachtree City, GA**

Emory at Peachtree City has board-certified cardiologists that offer services including general cardiology, interventional cardiology, echocardiography, nuclear cardiology, and electrophysiology. The clinic is made up of exam rooms, offices, labs, ultrasound rooms, PT rooms, and a conference area.



### **Greater Knoxville Ear, Nose & Throat | Powell, TN**

The medical office is currently in permitting. The space is approximately 13,000 square feet with rooms for exams, procedures, audiology tests, physical therapy, hearing aid repairs, and C.T. scans. There are also bathrooms, offices, storage areas, waiting areas, and a patio.



### **Peachstate Advanced Cardiac & Endovascular Clinic | Newnan, GA**

Located at the Summit Healthplex, Peachstate Advanced Cardiac and Endovascular (PACE) is a Center for Heart and Amputation Prevention (CHAMP) that works to create public awareness on cardiovascular disease. Our scope of work involved a 5,600-square-foot build-out for the 1st generation medical office.



### **Advanced Urology | Atlanta, GA**

The Advanced Urology project is 30,000 square feet with two Class C operating rooms, six procedure rooms, twenty exam rooms, offices, and support areas.





### **Oakhurst Medical Center | Atlanta, GA**

The Oakhurst Medical Center is a 12,911 square foot single story building. The building includes common areas, administrative offices, an outpatient clinic, pediatrics, OBGYN, dental, imaging, laboratory, optometry and ophthalmology spaces.



### **Eye Surgery and Laser Center | Madison, MS**

This Eye Surgery and Laser Center is 12,000 square feet with two Class C operating rooms, 18 exam rooms, offices and support areas.



### **Outpatient Imaging | Atlanta, GA**

OutPatient Imaging is a 10,000 square feet medical project. The project includes a bone density scan room, CT scans, digital fluoroscopy, digital mammography, magnetic resonance imaging, open magnetic resonance, nuclear medicine, an ultrasound, and X-ray.



### **Atlanta Vascular and Vein Center | Lawrenceville, GA**

The Atlanta Vascular and Vein Center is 3,500 square feet with one Class B operating room, four exam rooms, offices and support areas.



### **HealthPlex Performance Center | Madison, MS**

This facility has 100,000 square feet of interior space. About 60,000 square feet is designed as a medical health club with multiple interior pools, a fitness center, a physical therapy area, a track and an indoor field house. The remaining space includes a medical office, eye surgery center, exam rooms, and a spa.



### **Heartland Dental | Across the U.S.**

A typical Heartland Dental Center (HDC) project is 5,000 to 8,000 square feet. The facilities include 10 to 15 procedure rooms, offices and support areas.



### **Pediatric Offices | Across the U.S.**

By partnering with several different pediatric companies, Proficient has been able to design many offices across the United States.



### **Dental Offices | Across the U.S.**

Proficient has partnered with multiple dental and oral surgeon companies to design numerous offices across the United States.





### **Stanton Optical | Across the U.S.**

Proficient has designed multiple optical offices across the United States including Stanton Optical.



### **Apothea, Inc. | Gainesville, GA**

Apothea offers homeopathic, nutritional supplement and botanical manufacturing of natural healthcare products. Proficient provided services for a new addition and renovations to the company's building. The production facility has an in-house lab equipped with high-tech analytical equipment and staffed by Ph.D. specialists.



### **Innovation Compounding | Kennesaw, GA**

Innovation Compounding is a compounding pharmacy with over 7,000 prescribers and 70,000+ patients. Proficient provided services for the gutting and re-building of a 12,000-square-foot building for the facility.



### **Gynecology Associates of Gwinnett | Lawrenceville, GA**

Gynecology Associates of Gwinnett provides preventative, diagnostic, and advanced gynecological services for women. The health center includes a waiting room, exam rooms, offices, bathrooms, and storage spaces.



### **Atlanta Bone and Joint Specialists | Snellville, GA**

The Atlanta Bone and Joint Specialists project involves the renovation of an existing dental suite to an imaging suite. The scope of work includes a complete demolition of the area and a build back for one MRI and future imaging room.



### **Primary Care & Endocrinology | Cumming, GA**

Located in the Forsyth Physicians Center, the tenant buildout is for a medical office that contains rooms for examinations, procedures, x-rays, storage, reception, and waiting.



### **Belmont Physicians Center | Atlanta, GA**

Belmont Physicians Center is a 33,000 square foot Class A medical office building located in Smyrna, GA. The facility is anchored by Emory Healthcare.



### **AlignLife of Centrum | Cary, NC**

Located in an existing shopping center, the project involved the interior renovation of a 1-story chiropractic and natural health center. The scope featured removing finishes and interior walls, the erection of several walls, and adding new finishes throughout.