



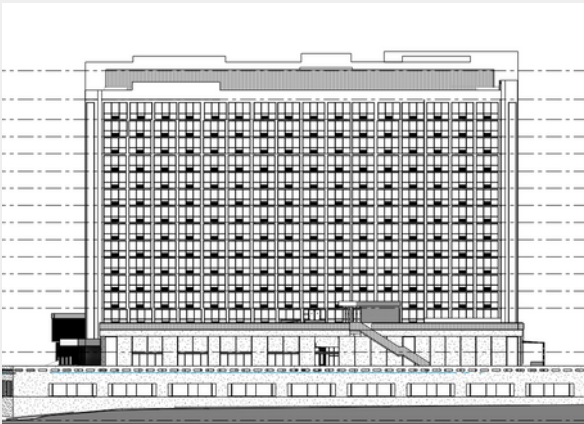
The Union at Auburn | Auburn, AL

The Union project involves the design of a new construction, 5-story student housing building. The structure includes a parking deck, apartment units, and a 3,791-square-foot clubhouse. The unit types include a mix of 2, 3 and 4-bedroom units.



Marconi Buildings E & F | Alcoa, TN

Currently in design, Marconi Buildings E & F are two, new construction, mixed use buildings located in Alcoa, Tennessee. Building E is 2-stories and 26,000 square feet. It has 6 retail tenants and 15 residential units. Building F is 2-stories, 17,500 square feet, and is home to Tennova Health as well as space for another tenant.



450 Hank Aaron Drive | Atlanta, GA

Involving the renovation and adaptive reuse of a former mid-century, 15-story hotel, the development features 249 apartment units, with a portion being micro-studio apartments, and approximately 55,000 SF of commercial tenant spaces on the 1st and 2nd floors.



159 Armour Shell | Atlanta, GA

The project includes converting an existing warehouse building to retail, restaurant, and gallery spaces. Exterior patios and a second floor will be also added.



Lee + White Redevelopment | Atlanta, GA

The Lee + White Development building dates back to the 1950's. The project features an adaptive reuse of an approximately 99,000-square-foot, double height yet single story building into a creative office space. Additional food hall space (25000sq) with inclusion of a bar area and patio.



Aiken Mall Redevelopment | Aiken, SC

For Phase 1 of the Aiken mall redevelopment, there will be an addition of 256 luxury apartments. Future plans include an upscale hotel as well as retail and dining establishments.



Cinepolis Movie Theater | Gaithersburg, MD

The 33,000-square-foot movie theater, with a new full-service kitchen addition, underwent complete gutting and renovation.



The Malone | Atlanta, GA

The Malone is the development of a 55+ living community. The facility is approximately 440,000 square feet and includes retail space, a leasing office, and amenities including demonstration cooking.



The Academy Lofts | Atlanta, GA

The old George Adair School, constructed in 1912, will be transformed into The Academy Lofts. The development works on revitalizing the Adair Park neighborhood by providing 35 affordable micro-units targeting creatives and artists and 2,500 square feet of loft-office space to serve nonprofits and small businesses.



The Leon | Atlanta, GA

The Leon will house 4 stories of 72 condo units above 2-3 levels of parking. There is one level of a 3,000-square-foot retail and office space.



Mammal Gallery at the Met | Atlanta, GA

The project involves the repurposing of a water tower that once served as a fire-suppression system for the 105-year-old mammoth warehouse complex. The tower will be a 2-story bar and the adjacent 6,100-SF warehouse will feature a 300-person performance venue.



Summerhill Apartments | Atlanta, GA

The Summerhill Apartments is a Type IIIA, 5-story to grade, 160-unit development. The existing location's house will be converted into amenity space.



Fetch Park | Atlanta, Alpharetta, & Buckhead, GA

Fetch Park is Atlanta's first full-service dog park restaurant and bar followed by locations in Alpharetta and Buckhead. Fetch Park features cooling stations, dog wash stations, and an off-leash area for dogs to roam as well as outdoor TV's and an open-air bar for the pet owners to enjoy sipping on craft cocktails, beer, and wine.



Quarter Westside | Atlanta, GA

The planned mixed use will feature more than 300 residential units, including a 273-unit apartment complex, and a collection of townhouses, flats and city homes. It includes 3 different buildings, 2 that are 4 stories and 1 that is 5 stories.



Broadstone | Sugar Hill, GA

Broadstone will have 4 wood-framed buildings with 315 units, a pool and 4,500 square feet of street-level retail spaces. It is a part of a mixed-use development, in Sugar Hill, GA.



The Local | Louisville, KY

The Local is an urban infill, mixed-use project that includes 282 residential units and 8,000 SF of street level retail that wrap around a 5-level parking deck. Portions of two historic warehouses were also preserved in a separate, 5-story adaptive reuse building, housing 23 units and 5,000 SF of amenity space.



Osprey Apartments | Atlanta, GA

Located at 980 Howell Mill, the project is a mixed-use development that includes three separate buildings that surround a parking structure. One building is for Osprey Apartments, a 14-story high rise with 326 apartment units. The other two buildings include retail and restaurant areas as well as amenity space.



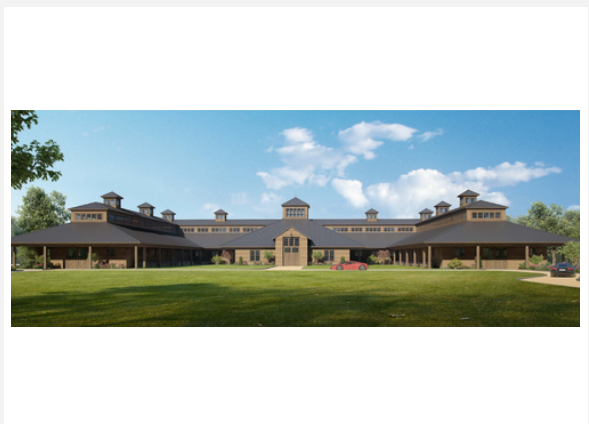
Edgewood Residential | Atlanta, GA

Developed by Capital City Real Estate, Edgewood Residential is a 13-story, high-rise development with 164,000 square feet. There is a total of 88 units with retail and office spaces. The site also includes an outdoor terrace with a pool and a roof deck area.



3015 RN Martin St | East Point, GA

The 30,000-square-foot commercial space features 10,000 square feet of 2-story office attached to 19,000 square feet of warehouse space. The office space will be converted to a mix of co-working, conference, office, and meeting areas. The warehouse will include 3 soundstages along with production rooms, dressing rooms, and event space.



Sandy Plains Stables | Tryon, NC

Located at 1986 Sandy Plains Road, Sandy Plains Stables sits on approximately 1 acre of land. The 28,225-square-foot structure has 2 sleeping rooms, 6 bathrooms, 1 office/observation lounge, 9 storage/feed/shaving areas, 46 horse stalls, 2 tack rooms, and 14 wash/groom stalls.



Evans Towne Center | Evans, GA

The Evans Towne Center project includes the design of a 4-story mixed-use building with amenity and white box retail areas, 5 4-story residential buildings, and a pool pavilion. The total square footage of the project is 395,400 square feet.



Premiere Theater | Birmingham, AL

With 48,000 square feet, the movie theater project was designed for the addition of a full-service kitchen along with a complete gutting and renovation.



115 East Broad Street | Athens, GA

Located at 115 East Broad Street is a new construction, 6-story mixed-use building. With a total of 31,663 square feet, the structure includes 19,256 square feet of office and 12,138 square feet of retail space, as well as Athens' first rooftop restaurant. With solar panels and a green roof up top, the building will meet LEED gold standard.