



Altla Buckhead Place | Atlanta GA

Altla Buckhead Place is a new multi-family housing development with 5 levels of 286 residential units above a 3-level open parking garage with 528 spaces. A pool courtyard, leasing/amenity spaces, and a clubhouse are also included.



Clark Atlanta University President's Residence | Atlanta, GA

Clark Atlanta University is a private Methodist historically black research university. The project featured is for a new 8,861-square-foot President's Residence for the university. It's features include a sitting room, a billiards room, a recreation room, a bedroom, a media room, a wine cellar, storage spaces, and a bathroom.



Crogman School Lofts | Atlanta, GA

The scope of this project includes the MEP design for converting an auditorium and stage in an old school building into one and two-story residential units.



Maloney Road Apartments | Knoxville, TN

The project is currently in permitting. It features 240 total units across eight 3-story buildings on Maloney Road. The leasing office, clubroom, and fitness room are located in one, approximately 2,700-SF building. The design includes 2 private parking garage buildings with approximately 14 separated, unconditioned garages each. The scope also includes a site power plan and site lighting design.



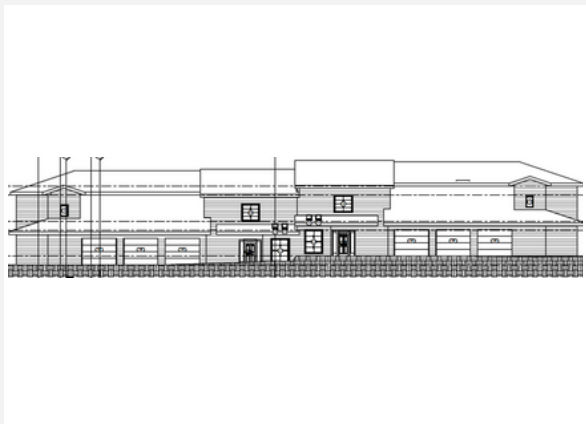
The Union at Auburn | Auburn, AL

The Union project involves the design of a new construction, 5-story student housing building. The structure includes a parking deck, apartment units, and a 3,791-square-foot clubhouse. The unit types include a mix of 2, 3 and 4-bedroom units.



**Parc at Murfreesboro
| Murfreesboro, TN**

The 359-unit, multi-family community is composed of 3-story buildings with pen breezeways and balconies. Along with a 9,500-SF clubhouse, the development includes a pool, lounge seating, cabanas, a hammock oasis, and an outdoor kitchen. Other amenities include fitness/yoga rooms, a pet spa, and a bark park.



Dunwoody Village | Dunwoody, GA

This project consists of a new 2-story, ~8,500-square-foot apartment building with 6 units and 2 unit types. The structure will be replacing an existing identical building that has been completely demolished. Existing power, water and sewer should still be on site, but existing sizes will need to be verified that they are compliant with current codes.



**Volar Barracks Renovation
| Fort Stewart, GA**

The project focuses on repairing Buildings 514, 515, 516, and 517. The 3-story barracks each need repairs for excessive moisture conditions and failing mechanical, electrical, and plumbing systems.



The Charles | Destin, FL

The Charles is an approximately 96,768-square-foot multi-family building with 192 units and 3 different unit types.



Kennesaw Crossing | Kennesaw, GA

The Kennesaw Crossing development, now known as The Ellison, is a new luxury apartment community that contains three 4-story buildings with 1, 2, and 3-bedroom layouts and 250 units total.



Ansley Park | Wilmington, NC

The new development consists of 10 three-story residential buildings with 24 to 36 apartment units each. A clubhouse and a swimming pool are also included.



Summerhill Apartments | Atlanta, GA

The Summerhill Apartments is a Type IIIA, 5-story to grade, 160-unit development. The existing location's house will be converted into amenity space.



200 Cumberland Bend | Nashville, TN

The scope of the project involves 4 residential buildings each with 4 floors and 303 total residential units. There is also approximately 10 square feet of amenity space including a pool.



Aiken Mall Redevelopment | Aiken, SC

For Phase 1 of the Aiken mall redevelopment, there will be an addition of 256 luxury apartments. Future plans include an upscale hotel as well as retail and dining establishments.



8th & Berry Apartments | Nashville, TN

8th & Berry Apartments project includes a 314-unit apartment complex separated into 5 buildings composed of 4 building types. Buildings 1,3,4, and 5 will be 4-stories, and building 2 will be 3. Building 1 will have a partial podium for leasing and amenities that will approximate 4,500 square feet. The apartments will consist of 6-8 unit types, including ANSI accessible options.



Covington Town Center Residences | Covington, GA

For the Covington Town Center project, Proficient is working on the MEP design for 376 residential units across 8 buildings. There is also a 4,800-square-foot clubhouse and 635 parking spaces.



Milton Townhomes | Atlanta, GA

The scope of the project involves a 110-unit townhome development. All units will be three stories and include spaces for living, kitchen/dining, laundry, and a 1-2 car garage. The residences will range from 1,280 to 1,690 square feet. The overall design will be divided into two phases.



1015 Boulevard | Atlanta, GA

1015 Boulevard will feature a 6-story over podium apartment building with one 5-story over podium liner building, retail, amenities, residences, and a parking deck. The building is 436,143 square feet and will include 6 levels of wood frame on top of a concrete podium slab and two levels of a pre-cast concrete parking deck.



Westside Future Funds (WFF) Properties | Atlanta, GA

With the mission to redevelop Atlanta's Historic Westside, WFF grouped contracts for the design and renovation of 3 vacant multi-family properties. The locations are 613 Echo Street with 7 units and 4,650 GSF, 588 Paines Avenue with 6 units and 4,000 GSF, and 592 Paines Avenue with 6 units and 4,500 GSF.



Perry Place | Brunswick, GA

The EarthCraft-certified project is composed of 8 2-story apartment buildings with a total of 56 residential units.



**Broadstone at Pullman Yard
| Atlanta, GA**

Broadstone Pullman Yard includes the MEP design of 3 buildings with Type IIIA wood frame construction and partial basements. There are 355 residential units with roughly 11 different layouts and approximately 8740 square feet of amenity space.



The Nations | Nashville, TN

Located on 5800 Centennial Boulevard, the development consists of 4 residential buildings with 4 floors each and 282 total units. The overall amenity space is roughly 10,000 square feet and located on the lowest level of one of the buildings. This includes a courtyard with a pool and cabana.



The Chelsea Westside | Atlanta, GA

The Chelsea Westside is an urban contemporary community with 92 luxury townhomes ranging from 1,616 to 2,888 square feet. There are 9 different floors.



Bern Street Apartments | Atlanta, GA

Developed by Avilia Real Estate, Berne Street Apartments is a 5-floor residential building with 220 units. A leasing office, fitness center, courtyard and pool are also included.



Westgate | Tuscaloosa, AL

Westgate is a 7-story luxury condominium and townhouse project designed as a second home for University of Alabama Football fans. The finished units range from one to five bedrooms, many with an additional "Kids' Area", and sit atop a 2-story secured parking deck. Stucco, brick, and limestone will cover the concrete frame building.



41 Marietta St. | Atlanta, GA

41 Marietta St. is a 12-level office conversion into a 131-unit apartment building. There will be a total of 6-unit types. The basement level will house amenity spaces, storage, and existing back of house locations.



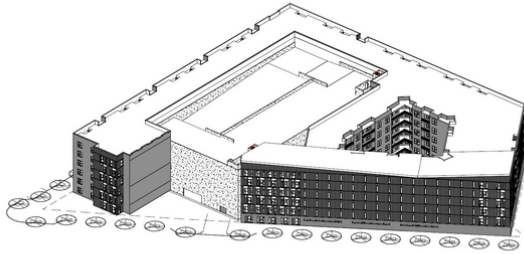
Bells Ferry Apartments | Acworth, GA

Phase 2 of the project includes 4 apartment buildings with a total of 350 units and 519 parking spaces. The development totals 416,200 gross square feet of residential space and 15,000 gross square feet of amenity space. Some amenities include areas for buying coffee leasing/fitness, and mail.



Porter Square | Brookhaven, GA

Porter Square consists of 2 buildings that are about 350,000 square feet with approximately 283 multi-family units and 17,000 square feet of retail space.



Alta Dairies Phase 2 | Atlanta, GA

With 5 floors and a precast parking structure, the residential building features 250 units and 8,000 square feet of public space that includes a leasing and club room, fitness center, and 5th floor sky lounge.



The Leon | Atlanta, GA

The Leon will house 4 stories of 72 condo units above 2-3 levels of parking. There is one level of a 3,000-square-foot retail and office space.



512 Flat Shoals | Atlanta, GA

The 512 Flat Shoals is in the East Atlanta neighborhood near Grant Park. This project is 3 stories with parking, totaling lot approximately 50,000 square feet.



Chalet Apartments Renovation | Smyrna, TN

The Chalet Apartments renovation includes the MEP design of an approximately 5,100-SF space in a 2-story leasing office and apartment building. It features a new fitness room, leasing office, and modified bathroom as well as updates to some of the apartments.



Evans Towne Center | Evans, GA

The Evans Towne Center project includes the design of a 4-story mixed-use building with amenity and white box retail areas, 5 4-story residential buildings, and a pool pavilion. The total square footage of the project is 395,400 square feet.



Quarter Westside | Atlanta, GA

The planned mixed use will feature more than 300 residential units, including a 273-unit apartment complex, and a collection of townhouses, flats and city homes. It includes 3 different buildings, 2 that are 4 stories and 1 that is 5 stories.



Broadstone | Sugar Hill, GA

Broadstone will have 4 wood-framed buildings with 315 units, a pool and 4,500 square feet of street-level retail spaces. It is a part of a mixed-use development, in Sugar Hill, GA.



The Local | Louisville, KY

The Local is an urban infill, mixed-use project that includes 282 residential units and 8,000 SF of street level retail that wrap around a 5-level parking deck. Portions of two historic warehouses were also preserved in a separate, 5-story adaptive reuse building, housing 23 units and 5,000 SF of amenity space.



Osprey Apartments | Atlanta, GA

Located at 980 Howell Mill, the project is a mixed-use development that includes three separate buildings that surround a parking structure. One building is for Osprey Apartments, a 14-story high rise with 326 apartment units. The other two buildings include retail and restaurant areas as well as amenity space.



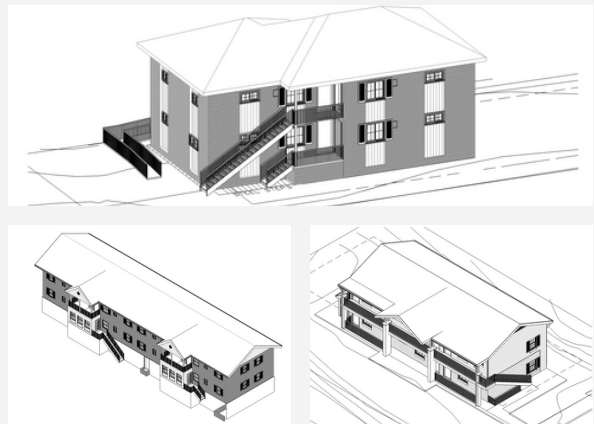
Edgewood Residential | Atlanta, GA

Developed by Capital City Real Estate, Edgewood Residential is a 13-story, high-rise development with 164,000 square feet. There is a total of 88 units with retail and office spaces. The site also includes an outdoor terrace with a pool and a roof deck area.



San Marco Crossing | Jacksonville, FL

San Marco Crossing consists of two buildings: Parcels A and B. Parcel A features a 289,881-square-foot building with 290 residential units. Parcel B contains 198 units and 198,064 square feet.



Westside Future Funds (WFF) Properties | Atlanta, GA

With the mission to redevelop Atlanta's Historic Westside, WFF grouped design contracts for 3 multi-family properties near English Ave. The scope includes the design and renovation of the buildings located on 401 Lindsay St, 356 James P. Brawley Dr, and 400 Paines Ave .



**Cherokee Orchard Rentals |
Gatlinburg, TN**

The Cherokee Orchard Rentals project involved the mechanical, electrical, and plumbing design for two stand-alone, 2-story residential units. The units share the same layout with the exception of width. One is 20'-0" wide and the other is 18'-0" wide.



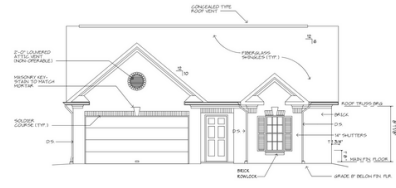
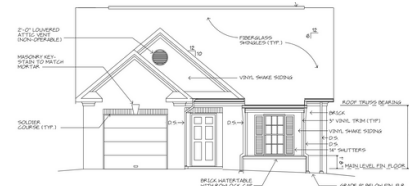
CNE Fourplex | Chattanooga, TN

We provided the MEP system design for a Chattanooga Neighborhood Enterprise (CNE), 2-story fourplex on Union Avenue.



**DeFours Ferry Townhomes
| Atlanta, GA**

Each townhome is 2,530 square feet with 3 bedrooms, 3.5 baths and a 2 car garage. There are 25 total total units. All dwellings feature an open floor plan with a living room, dining room, kitchen, covered deck, and large jet tub located off of the master suite.



**Washington Station Condominiums
| Knoxville, TN**

For the Washington Station Condominiums, Proficient provided the MEP engineering design for two new condominium buildings. One is comprised of 5 units and 7,700 square feet and the other possesses 4 units and 6,100 square feet.



The Academy Lofts | Atlanta, GA

The old George Adair School, constructed in 1912, will be transformed into The Academy Lofts. The development works on revitalizing the Adair Park neighborhood by providing 35 affordable micro-units targeting creatives and artists and 2,500 square feet of loft-office space to serve nonprofits and small businesses.



The Residences at Crystal Lake | Pompano Beach, FL

The Residences at Crystal Lake is a 92-unit, 2-story townhouse community with 4 different unit types. The community includes a sparkling pool, an internet café, a 24-hour fitness center, a children's playground, and a free after school and summer kids' program.



Berkshire Terminus | Atlanta, GA

Berkshire Terminus has 359 apartment units with luxurious interiors and the highest quality community amenities. These amenities include a leasing office, an enclosed parking garage, a two-story fitness center, a club room, an outdoor pool and a rooftop terrace.



Lenox Townhomes | Atlanta, GA

This 4-unit townhome building includes three levels of living space. Each unit is 2,380 square feet and has 4 bedrooms, 3.5 bathrooms, and a 2-car garage. Other features include a kitchen, a dining room, a family room, a deck, a laundry room and a porch.



Crescent Central Station | Orlando, FL

This multi-family building houses 279 luxury units and retail spaces on the 1st floor. Its amenities include an enclosed parking garage with electric vehicle charging stations, a dog grooming facility, a 2-story fitness center, a club room, an outdoor pool, and a rooftop terrace.



**Conservatory at Druid Hills
| Decatur, GA**

The gated community has 1 and 2-bedroom apartments in 7 styles different styles. The residents enjoy luxurious amenities such as 2 swimming pools, a state-of-the-art fitness center, tennis courts, grilling areas, a porch-style swing, gazebos, and on-site car washes.



**395 James P. Brawley Apartments
| Atlanta, GA**

Owned by WFF, the 395 James P. Brawley Apartments project consists of the complete renovation of 3 existing apartment buildings of 35 units into 31 units with a laundry and community room. The interior modifications will provide all new code complaint building systems and ADA compliant units.



Riverside Townhomes | Atlanta, GA

Each of the Riverside Townhomes have 2 floors that consist of a garage, 3 bedrooms, 2.5 bathrooms, a kitchen, a living room, a laundry room and a dining room.



Angier Townhomes | Atlanta, GA

The Angier Townhome project consists of individual buildings that have four units each. The 1,590 square foot units each have 3 floors of living space with 3 bedrooms, 3.5 bathrooms, a garage, and a roof deck with a wet bar and fireplace.



Virginia Park Townhomes | Atlanta, GA

The Virginia Park Townhomes is a community of 40 townhomes in the Virginia Highlands/Druid Hills Atlanta area. The three-story townhomes are 2,400 square feet with 3 bedrooms and 3.5 baths.



152 Vine Street | Atlanta, GA

On 152 Vine Street, Proficient provided the MEP design for a single 3-story apartment building with a basement. The EarthCraft-certified project consists of 6 unit types with a total of 76 units.



2909 Peachtree Rd | Atlanta, GA

This historical building renovation is on Peachtree road just north of downtown Buckhead. Proficient preserved much of the original building while upgrading the MEP Systems and efficiencies.



Clifton Tower Renovation | Atlanta, GA

Clifton Tower is an existing student housing building located on Emory University's campus. We worked on interior and exterior renovations for the 5-story, 35,393-square-foot building.