



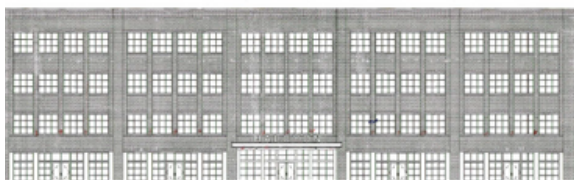
Lee + White Redevelopment | Atlanta, GA

The Lee + White Development building dates back to the 1950's. The project features an adaptive reuse of an approximately 99,000-square-foot, double height yet single story building into a creative office space. Additional food hall space (25000sq) with inclusion of a bar area and patio.



159 Armour Shell | Atlanta, GA

The project includes converting an existing warehouse building to retail, restaurant, and gallery spaces. Exterior patios and a second floor will be also added.



Halcyon Building #1100 | Alpharetta, GA

Halcyon Building #1100 is 3 stories of office space over 1 story of retail with 14,000 square feet per floor (56,000 square feet total). The project was designed with the intent for LEED certification.



160 Trinity Avenue | Atlanta, GA

The 160 Trinity Avenue project is a 61,399-square-foot, 3-story structure. It is a City of Atlanta office building located in the middle of the Downtown Atlanta Government Center. The building was designed to include a VRF system and LEED certification.



Complex | Atlanta, GA

Complex, a redevelopment involving six attached post-WWII warehouse buildings in West Midtown into loft office and retail spaces, totals approximately 105,000 square feet. The adaptive reuse project is one of many that offers office tenants a location different from a glass tower.



4651 CDR | Dunwoody, GA

The project consists of a three-story office building totaling approximately 27,000 gross square feet. The lobby on the street level will be stacked with two office levels above. Required parking of 89 spaces is located in a deck under the building.



Two Buckhead Plaza | Atlanta, GA

Two Buckhead Plaza, a 200,000 square foot, Class A Office Building in the Buckhead District of Atlanta, is part of a mixed-use urban development. This also includes high-rise residential, retail and parking functions.



The Willoughby | Atlanta, GA

The Willoughby is the Beltline's first ground-up office building. It will be a four-story, 43,000-square-foot complex snuggled up next to the Historic Fourth Ward Skate park.



730 Peachtree Street | Atlanta, GA

The Circa 730 project is a roughly 30,000-square-foot renovation of an office building located on 730 Peachtree Street that was built in 1967. This includes the lobby area and 3rd floor.



550 Pharr Road | Atlanta, GA

Three, an up-and-coming advertisement firm, relocated their corporate office to the top two floors of the 550 Pharr Building in Buckhead. The project renovation includes 11,000 square feet of office space with upgrades to all of the outdated MEP systems within the 47-year-old building.



Gateway Center Two | Atlanta, GA

Gateway Center Two is a 51,000-square-foot, Class A office building located on the South Side of Atlanta. The building is three floors with a 3,000-square-foot lobby and 2 24,000-square-foot floors above.



McKesson | Across the U.S.

We have completed multiple projects for McKesson office buildings in metro Atlanta. This includes a security monitoring remodel and 19,000-square-foot fit-up of the North Druid Hills building's 4th floor. Proficient has also performed upgrades on 4 stories of the Windward, GA office building.



Property Service Group Office | Knoxville, TN

A historic church building on 6th Avenue was renovated into a 4,500-square-foot office for Property Service Group's Southeast location.



First Century Bank Addition | Maryville, TN

The First Century Bank Addition project is a 700-square-foot office space addition to an existing First Century Bank branch office. This includes a mechanical closet, office, and conference room with sink.



Ham 'N Goodys Operations | Knoxville, TN

For Ham 'N Goodys, Proficient worked on an approximately 4,200-square-foot test kitchen renovation and a 7,000-SF office space inside a 2-story building located on Regal Lane.



Tevet Technology Solutions Office Renovation | Greenville, TN

This renovation includes the HVAC and Plumbing design for 13,000-square-foot office space, and the ventilation design for an 8,000-square-foot warehouse space. There will also be fire protection design intent documents office and warehouse spaces.



Mytex | Covington, GA

The project for Mytex in Covington, GA involves the renovation of an office space and a warehouse component.



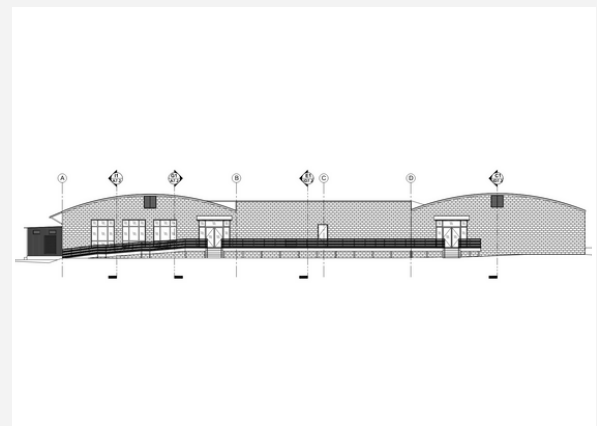
PNC Bank | Atlanta, GA

Located at 1075 Peachtree Street, the PNC Bank project involved a fit out of a 27,000-square-foot office tower floor from an empty shell condition. The fit-out included the MEP design of individual offices, open office space, conference rooms, a café, a storage room, a reception area, and an elevator lobby. The project is LEED silver certified.



3015 RN Martin St | East Point, GA

The 30,000-square-foot commercial space features 10,000 square feet of 2-story office attached to 19,000 square feet of warehouse space. The office space will be converted to a mix of co-working, conference, office, and meeting areas. The warehouse will include 3 soundstages along with production rooms, dressing rooms, and event space.



Banko Design | Marietta, GA

The Banko Design project includes the renovation of an approximately 29,200-square-foot, existing building. About 16,400 square feet of the structure will be warehouse space. The remaining areas will be utilized for offices, conference rooms, a breakroom, a lounge and a lobby.



SAIC Office Renovation | Cookeville, TN

Located on the Regions Bank Building's first floor, we provided the mechanical, electrical, and plumbing engineering design for a Tennessee Tech Foundation 7,700-square-foot office renovation. The new layout includes an open office, work spaces, conference rooms, a break room, and restrooms. The existing vault was also removed.



Hitachi Zosen Tenant Improvement | Knoxville, TN

Located in Cedar Bluff, the approximately 7,600-square-foot renovation took place on first floor only. The scope included updating the common restrooms, meeting room, offices, lobby, breakfast and food prep areas, and fitness room.



Baird Office | Knoxville, TN

The approximately 4,600-SF office tenant fit-out required a new VAV and PIU design to meet the space's needs. The scope also included fire protection design intent.



Keller Williams | College Park, GA

Keller Williams required the MEP design for a roughly 12,000-square-foot real estate office. The building features reception areas, training classrooms, breakrooms, and roughly 40 private offices.