



**Mammal Gallery at the Met
| Atlanta, GA**

The project involves the repurposing of a water tower that once served as a fire-suppression system for the 105-year-old mammoth warehouse complex. The tower will be a 2-story bar and the the adjacent 6,100-SF warehouse will feature a 300-person performance venue.



**The Rock Fitness Center
| Cartersville, GA**

The Rock Fitness Center is a roughly 17,000-SF gym. Proficient worked on a renovation of the building's admin areas into more fitness spaces such as racquetball courts, saunas, and group activity rooms. The indoor pool was also fully conditioned with a de-humidification unit.



**The Retreat Clubhouse
| Sacramento, CA**

The clubhouse will feature offices, a leasing/conference room, study pods, a break/work room, restrooms, a gym, gaming and social lounges, a computer lab, a sauna, tanning areas, and covered patios.



**Ritz-Carlton Lake Oconee Pool
Facility | Greensboro, GA**

The facility will consist of two levels and serve as a building and bath house for families. The building totals 3,570 square feet and will include restrooms/washrooms, a game room, storage areas, and an office.



**Adventure Air Sports
| Kennesaw, GA**

Adventure Air Sports required a full tenant fitup for a 38,000 square foot facility in the basement of an existing building. The facility offers trampolines, adventure courses, a zip line, and foam pits.



**Stonebridge Clubhouse
| Arlington Heights, IL**

Amenities for this project include a heated pool, a gym, lighted tennis and basketball courts.



**Landmark at Creekside Grand
| East Point, GA**

Amenities for this project include a pool, fitness center, and conference room.



Atlanta Music Project | Atlanta, GA

Atlanta Music Project provides music education for youths and offers rentable space to the public for conferences, luncheons, watch parties, concerts, and banquets. The venue has full/audio/visual capability, flexible staging, 200 seats, a grand piano, and conference and banquet tables.



Clemson Ridge | Clemson, SC

Amenities for this project include a pool, hot tub, business center, gym, grilling stations, and a conference room.



LA Fitness | Across the Southeastern U.S.

The typical LA Fitness is approximately 50,000 square feet with indoor pool, cardio mezzanine level, basketball gym, free weights, machine area, aerobics room, spin room, locker rooms with sauna, and support areas.



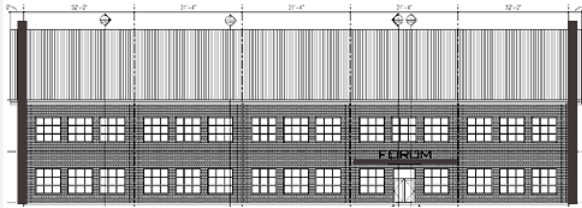
Knox Box Karaoke | Knoxville, TN

Proficient provided design services for the renovation of a 1,500-square-foot building unit into a bar located on Gay Street. Starting in 1908, this downtown area is home to Knoxville's first skyscrapers and steel-frame buildings of 10 stories or more. The design also includes a new 3 compartment sink and bar area.



McGinnis Ferry Clubhouse | Suwanee, GA

Amenities for this project include a pool, hot tub, business center, gym, grilling stations, and a conference room.



**Haclyon Building #1300
| Alpharetta, GA**

Haclyon Building #1300 is a 2-story building between 1,100 - 1,400 square feet. The Forum Athletic Club occupies both floors.



Athens Ridge | Athens, GA

Amenities for this project include a UGA themed pool, hot tubs, tanning beds, jumbotron TV, fitness center, grilling station, business center, and conference room.



Grace Midtown | Atlanta, GA

The Grace Midtown project consisted of two separate designs. The first section involved the “kidtown” area, and the second consisted of a new auditorium. The work for “kidtown” includes a standalone building with 8 different classrooms and 2 sets of bathrooms. The auditorium contains a sanctuary, performance theater, and a café bar.



**Cinepolis Movie Theater
| Gaithersburg, MD**

The 33,000-square-foot movie theater, with a new full-service kitchen addition, underwent complete gutting and renovation.



**Waterleaf Clubhouse
| Saint Lucie, FL**

Amenities for this project include two pools, a fully equipped fitness center, and a sand volleyball court.



**Ogle Drive Clubhouse
| Pigeon Forge, TN**

On Ogle Drive, an existing building shell will be transformed into a new 6,000-square-foot clubhouse office for a campground. Site lighting for a 5,000-square-foot parking space was also included.



**Deerwood Village Clubhouse
| Ocala, FL**

Amenities for this project include a pool, sundeck, poolside grilling and dining, and lastly a conference center with Starbucks Coffee.



Three Ring Studios | Covington, GA

Three Rings Studios is a 40,000-square-foot building consisting of two 50'-0" high sound stages and back of house areas. Sound stage areas were designed with acoustics and production flexibility in mind.



**Uptown Buckhead Clubhouse
| Atlanta, GA**

Amenities for this project include a saltwater pool and cabanas, poolside fire pit, media & gaming area, as well as a fitness center.



Sandy Plains Stables | Tryon, NC

Located at 1986 Sandy Plains Road, Sandy Plains Stables sits on approximately 1 acre of land. The 28,225-square-foot structure has 2 sleeping rooms, 6 bathrooms, 1 office/observation lounge, 9 storage/feed/shaving areas, 46 horse stalls, 2 tack rooms, and 14 wash/groom stalls.



Carver Theatre | Orlando, FL

This 320-seat "black box" performing arts theatre will lay at the heart of The Renaissance at Carver Square. Intended to accommodate a wide range of performances, the building will need room acoustics, mechanical noise control, and audio/video systems design services for the theatre and supporting spaces.



**Grand Reserve Clubhouse
| Naperville, IL**

Amenities for this project include a pool, cabanas, firepit, media room, business center, gym, outdoor kitchen, shuffle board, and a conference room.



Clues and Cocktails | Atlanta, GA

The project is a 1,225-square-foot establishment that provides an immersive experience where guests solve themed mysteries over cocktails and beers. From previously being the location of Escape Room Atlanta, the room's existing lobby was converted into a bar and kitchen.



Century Park Fitness Center | Duluth, GA

Century Park is a 440-unit apartment community. The complex offers many amenities including a private recreational center with park like settings, a pavilion, and a pool. Proficient Engineering provided services for the fitness center.



Premiere Theater | Birmingham, AL

With 48,000 square feet, the movie theater project was designed for the addition of a full-service kitchen along with a complete gutting and renovation.



The Pointe at Collier Hills | Atlanta, GA

Amenities for this project include a pool, sundeck, poolside grilling and dining, media room, peloton, cycling room, and lighted tennis courts.



Sevierville Axe House | Sevierville, TN

Sevierville Axe House required a 3,600-SF renovation of their new space. The project included an approximately 600-SF kitchen space, a 400-SF bar space, and 200-SF restrooms. The existing HVAC system was assessed for coordination with the new kitchen hood system. The lighting addressed new emergency and egress lighting requirements and the remaining 2,400-SF space.



The Axe House Renovation | Pigeon Forge, TN

The renovation features the plumbing design for approximately 300-SF of kitchen and bathroom space. The scope included 3 new and 1 relocated bathroom and a small kitchen with a 3-compartment sink, hand sink, mop sink, and floor drains. A 3-comp sink was designed to drain to the grease drain and exterior grease trap.